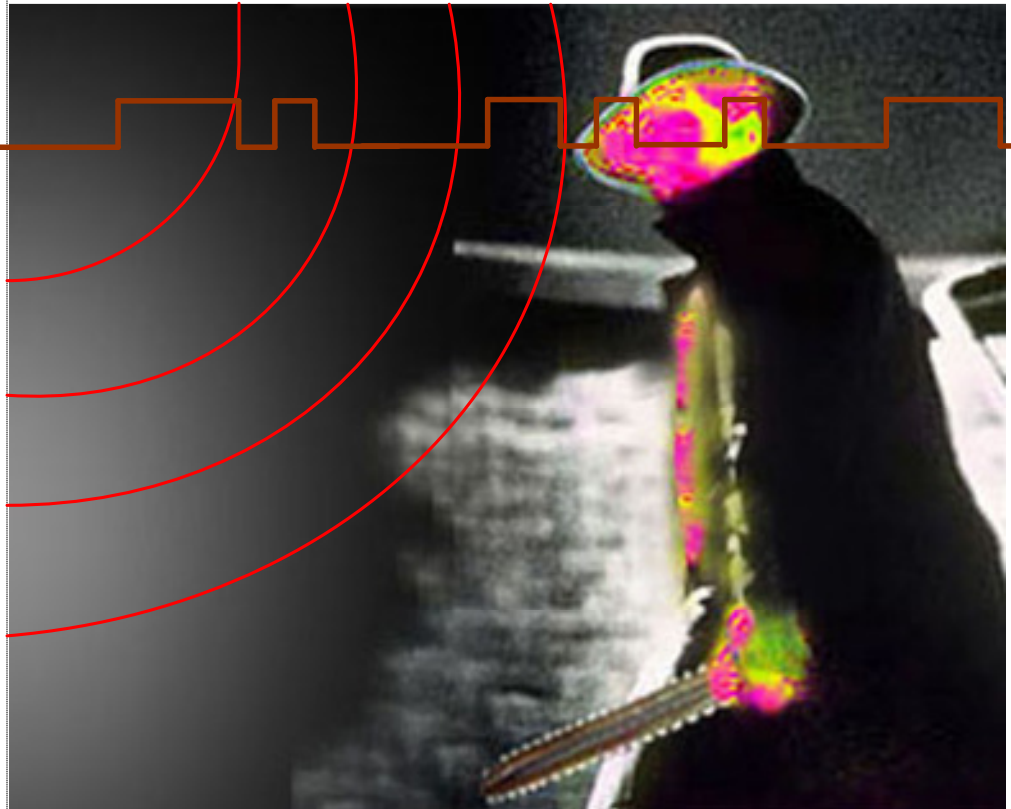


# EE966D



- Exclusive SD & AUTO-LED sensing technologies
- Remarkable detection performance
- Outstanding stability & reliability in harsh environments
- Auto LED in unique arrangement
- Alarm output with high reliable eRelay

The remarkably developed ePIR EE900 Series of Pure Digital PIR Detectors is especially suited for harsh residential or commercial environment. Embedded with Sigma Delta (SD), Auto LED sensing, as well as DVC technologies on a complete single chip solution platform, **ePIR** provides False Alarm Immunity while maximizing detection performance. **ePIR** is ideal for conquering the limitations of traditional PIRs and makes for dealer-friendly installation and operating capabilities.



Space Detector  
21

### HIGHLIGHTS & FEATURES

**Four elements (Quad) imaging technology-**

Improves motion detection performance  
Compact design for all types of installations

**Complete single chip solution enhances the system stability and reliability-**

Auto temperature compensation  
Auto pulse width adjustment  
Auto sensitivity adjustment  
Environmental immunity  
Outstanding pet immunity  
Mounting calibration free (6-8ft)

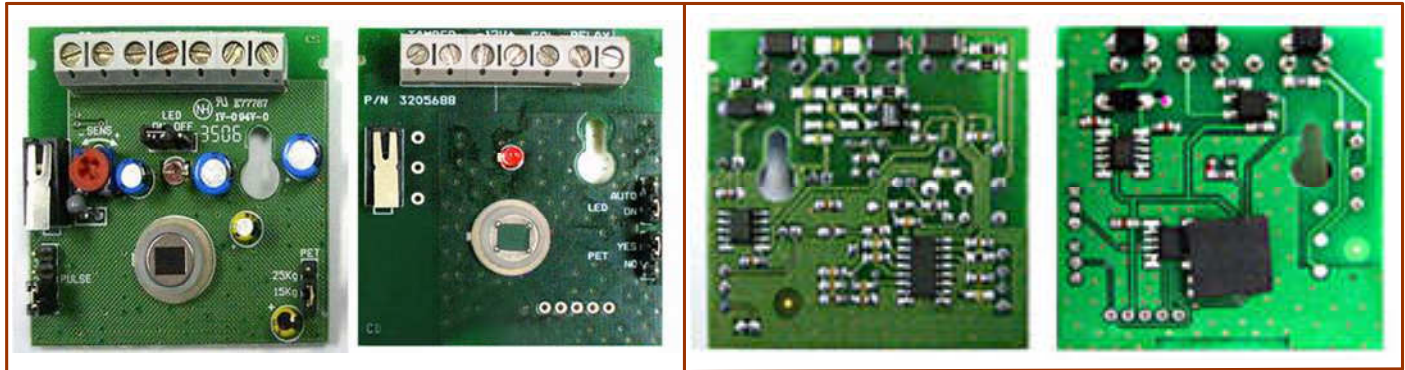
**Auto LED sensing and Auto-off arrangement-**

**WLI** without reducing detection performance and remains non-blinded  
Anti-disclosing the detection profile  
Keeps friendly environment  
Reduces installation workload and minimizes human error  
Increases protection level and practicability

EE Systems Group Inc.

**EE966D**

**Traditional vs ePIR**

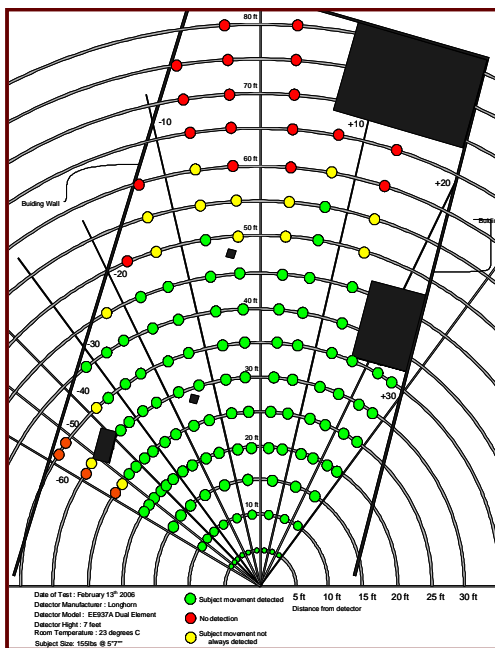


Traditional

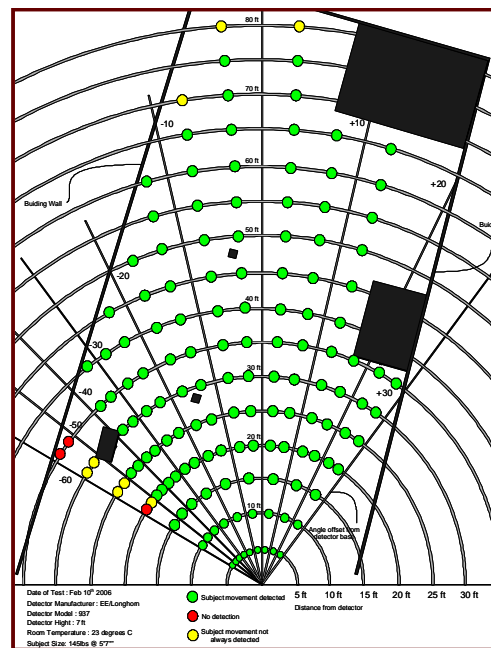
ePIR

Traditional

ePIR



Traditional Coverage



ePIR Coverage

Space Detector

**Specifications**

<b>Detection Method:</b>	Quad (Four element) ePIR	<b>Alarm Period:</b>	2 sec	<b>Operating Humidity Range:</b>	95% max relative humidity
<b>Power input:</b>	9.6 - 16Vdc	<b>Alarm Output Relay:</b>	N.C 28Vdc 0.1A with 10 Ohm in line resistor	<b>RFI Protection:</b>	30V/m 10 -2000 MHz
<b>Current Consumption:</b>	Standby: 16mA (± 5%) Active with LED: 16mA (± 5%) Active w/o LED: 13mA (± 5%)	<b>Tamper Switch:</b>	N.C 28Vdc 0.1A with 10 Ohm in line resistor	<b>EMI Protection:</b>	50,000V electrical interference from lightning
<b>Detection Range:</b>	60ft. (18m); 80ft. (24m)/LRCL	<b>Warm Up Period:</b>	35 sec (± 5 sec)	<b>White Light Immunity:</b>	up to 10,000 LUX
<b>LED Auto Disable:</b>	30 minutes; extendible window as required	<b>Operating Temperature:</b>	14° F to 122° F	<b>Pet Immunity:</b>	up to 65Lbs. (30Kg.)
		<b>Storage Temperature:</b>	-22° F to 158° F	<b>Dimensions:</b>	3.6 " x 2.3" x 1.5"

EE Systems Group Inc.

4978 Santa Anita Ave. Temple City, CA 91780 Phone Number: 1-877-579-3889 Fax Number: (626) 452-9194 www.eesgi.com