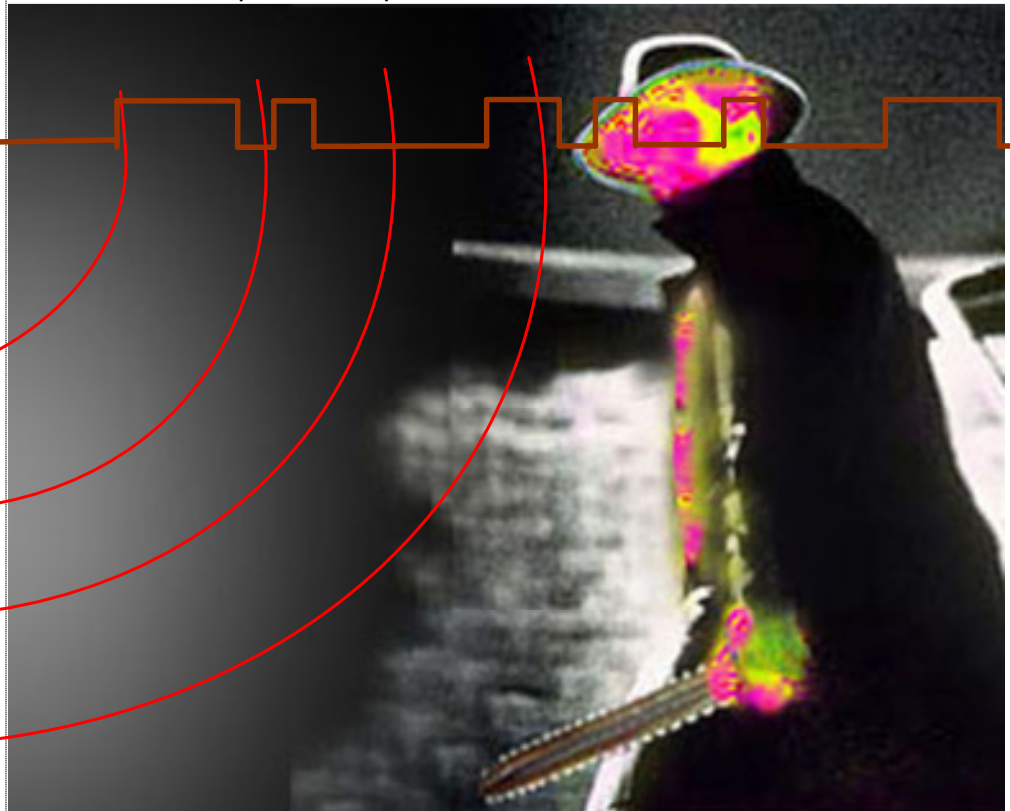


# EE941D

The remarkably developed ePIR EE900 Series of Pure Digital PIR Detectors is especially suitable for harsh residential or commercial environment. Embedded with Sigma Delta (SD), Auto LED sensing, as well as DVC technologies on a complete single chip solution platform, **EE941D** provides False Alarm Immunity while maximizing detection performance. **EE941D** is ideal for conquering the limitations of traditional PIRs with dealer-friendly installation and operation capabilities.



Space Detector

1 2

- Exclusive SD & AUTO-LED Sensing Technologies
- Remarkable Detection Performance
- Outstanding Stability & Reliability in Harsh Environments
- Auto LED in Unique Arrangement
- Alarm Output with High Reliable eRelay

### HIGHLIGHTS & FEATURES

**Multi-element imaging technology**

Improves motion detection performance  
Compact design for all types of installations

**Complete single chip solution enhances the system stability and reliability**

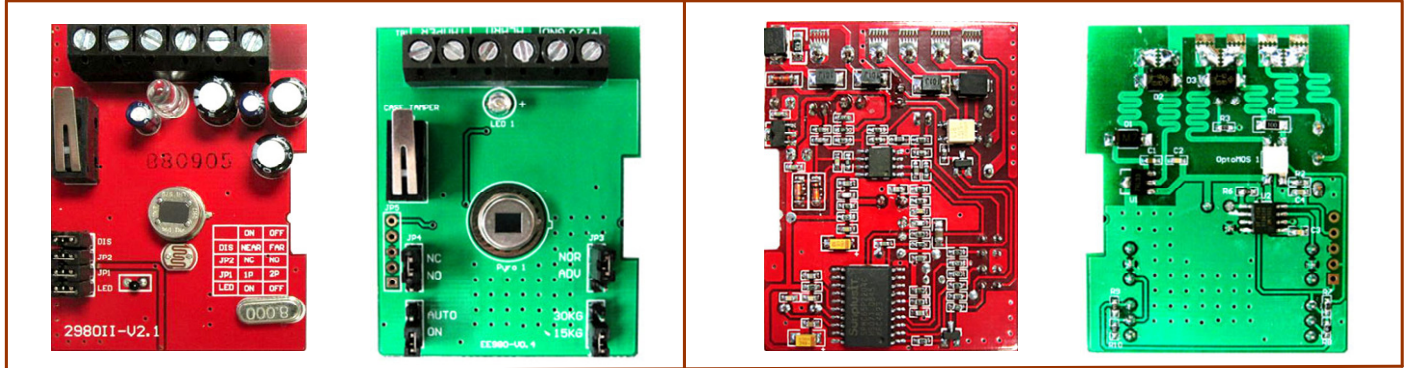
Auto temperature compensation  
Auto pulse width adjustment  
Auto sensitivity adjustment  
Environmental immunity  
Outstanding pet immunity  
Mounting calibration free (6-8ft)

**Auto LED sensing and Auto-off arrangement**

White light immunity without reducing detection performance and detector remains non-blinded  
Anti-disclosing the detection profile  
Keeps friendly environment  
Reduces installation workload and minimizes human error  
Increases protection level and practicability

**EE941D**

**Traditional vs ePIR**

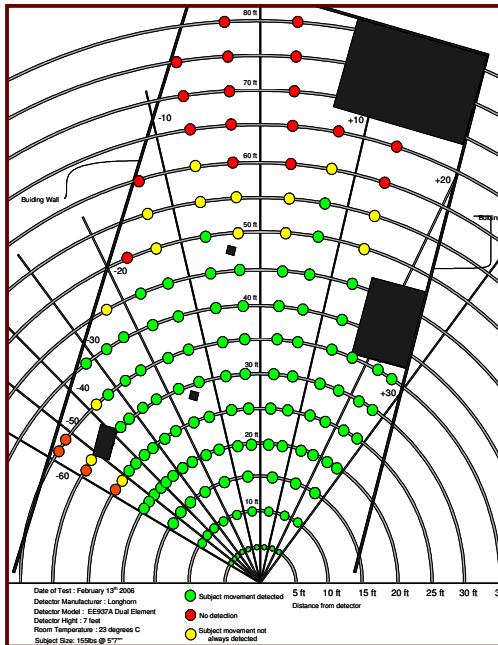


Traditional

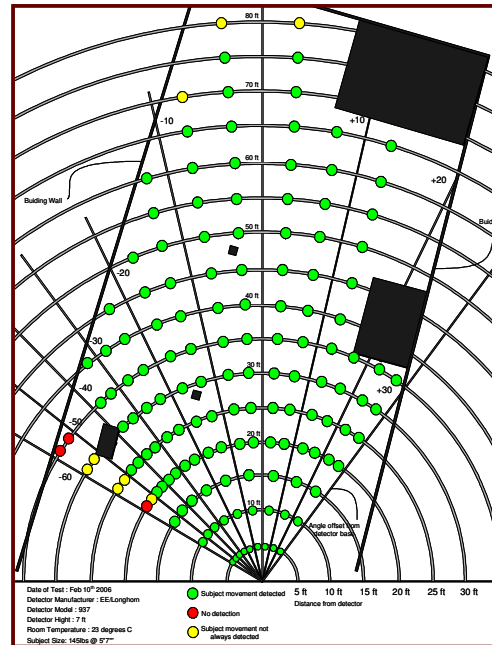
ePIR

Traditional

ePIR



Traditional Coverage



ePIR Coverage

Space Detector

2 2

**Specifications**

<b>Detection Method:</b>	ePIR	<b>Alarm Output Relay:</b>	N.C/N.O 28Vdc 0.1A with 10 Ohm in line resistor	<b>Pet Immunity: (Auto)</b>	up to 35Lbs. (16Kg.)
<b>Power input:</b>	9.6 - 16Vdc	<b>Tamper Switch:</b>	N.C/N.O 28Vdc 0.1A with 10 Ohm in line resistor	<b>Pet Immunity: (On)</b>	up to 65Lbs. (29Kg.)
<b>Current Consumption:</b>	Standby: 16mA (± 5%)	<b>Warm Up Period:</b>	35 sec (± 5 sec)	<b>Operating Humidity Range:</b>	Max 95% relative humidity noncondensing
<b>Detection Range:</b>	65' x 65', 80' x 7' w/LRCL w/o direction selection	<b>Operating Temperature:</b>	14°F to 122° F	<b>RFI Protection:</b>	30V/m 10 -2000 MHz
<b>LED Auto Disable:</b>	30 minutes; extendable window as required	<b>Storage Temperature:</b>	-22° F to 158° F	<b>EMI Protection:</b>	50,000V electrical interference from lightning
<b>Alarm Period:</b>	2 sec	<b>White Light Immunity:</b>	up to 10,000 LUX	<b>Dimensions:</b>	3.6 " x 2.3" x 1.8"

EE Systems Group Inc.