

eEMLock 1200

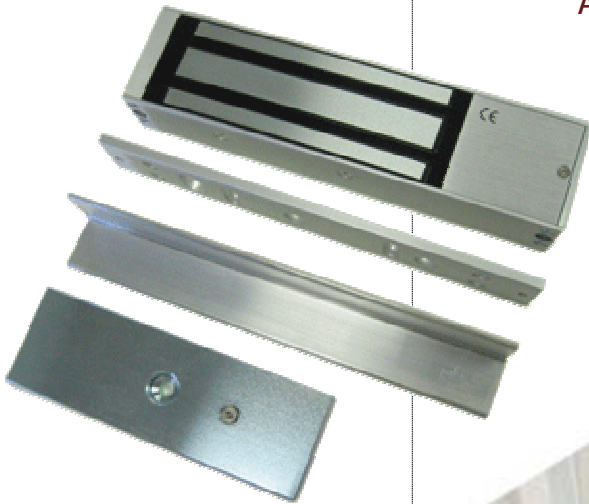
Universal high holding force electronic magnet lock. Built-in dual voltage & low current configuration.

Application Type:

- Aluminum frame door
- Glass door
- Metal door
- Wood door

Including:

- Mounting bracket



Heavy Duty
Reliable
Powerful

Specification

Holding Force: 1200 LBs+
 Operating Voltage: 12 / 24 VDC
 Current Draw: 500 mA / 12 VDC
 250 mA / 24 VDC

Application: Out-swing
 In-swinging

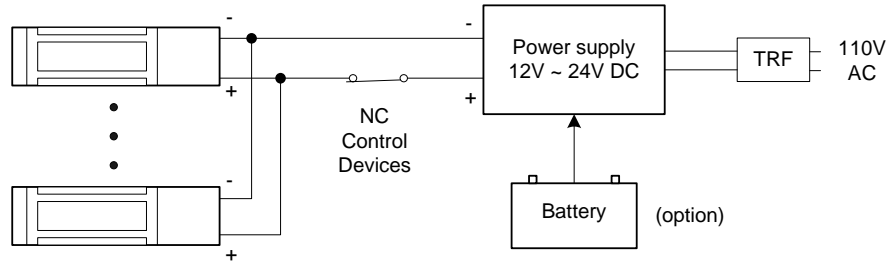
Dimension: 2 5/8" X 10 1/2" X 1 1/2"
 Weight: 10 LBs



Accessories

eEMLock 1200

Typical Application



Example of Multiple Application

